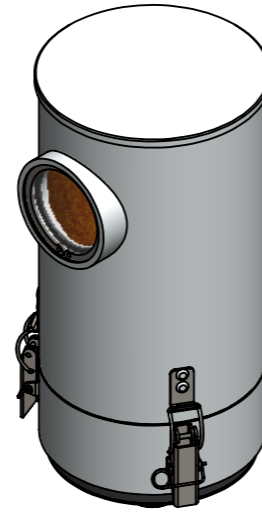




DUO-VARIO
300-MA



DUO-VARIO
320-MA



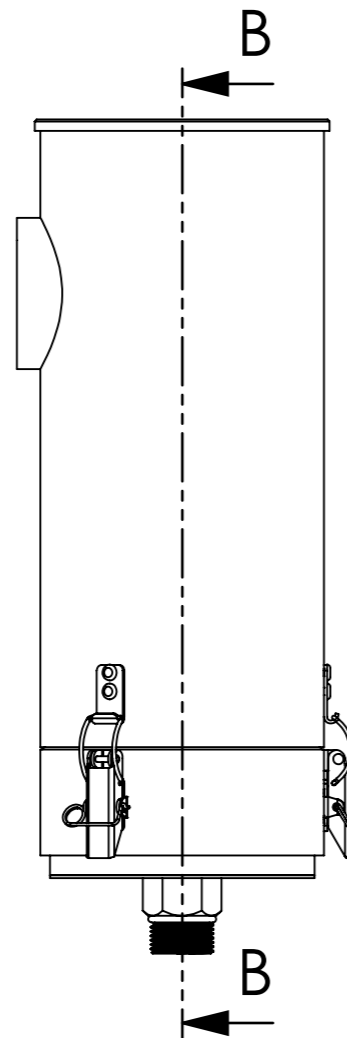
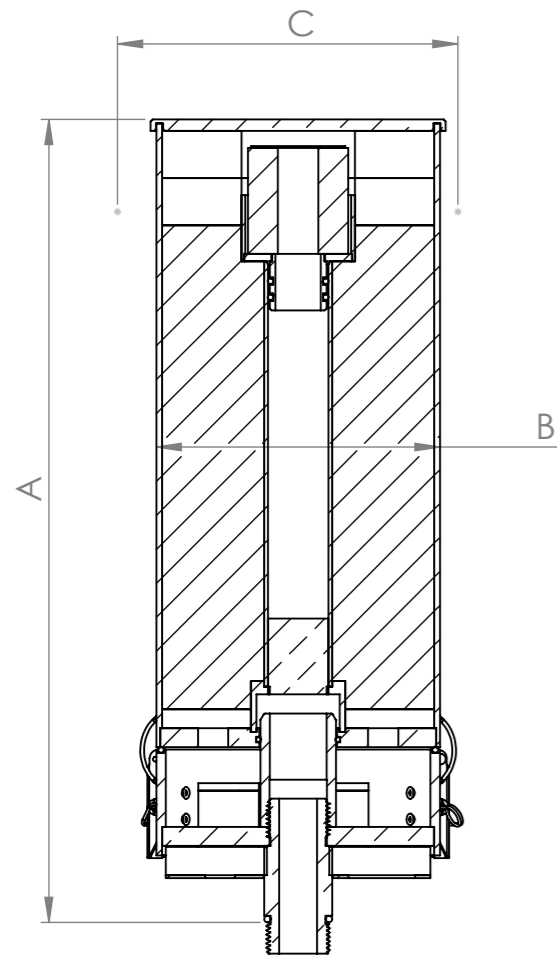
DUO-VARIO
500-MA



DUO-VARIO
520-MA



DUO-VARIO
550-MA



Adsorber	Article no. / Artikel Nr.	Code / Typenschlüssel	Total weight / Gewicht [kg]	Adsorbents weight / Gewicht [kg]	A [mm]	B [mm]	C [mm]	Connection / Anschluss
DUO-VARIO 300-MA	07.0007.58	DV 300-MA_F_11_SA_G1α	3,0	0,9	296	110	147	G 1"
DUO-VARIO 320-MA	07.0007.53	DV 320-MA_F_11_SA_G1α	3,8	1,3	396	110	147	G 1"
DUO-VARIO 500-MA	08.0003.31	DV 500-MA_F_22_SA_G1α	5,4	2,3	326	150	192	G 1"
DUO-VARIO 520-MA	08.0003.39	DV 520-MA_F_22_SA_G1α	6,9	3,0	426	150	192	G 1"
DUO-VARIO 550-MA	08.0003.40	DV 550-MA_F_22_G1α	8,7	4,2	526	150	192	G 1"

			Allgemein- toleranzen DIN ISO 2768-mK				Rohabmessung:	
Datum			Name		Material:		Gewicht (kg):	
Erstellt 28.05.2018			Daniel Zinic		Benennung:		VARIO MA-D	
Gepr.			Daniel Zinic		Artikelnummer:		Status freigegeben	
Freig. 28.05.2018			Daniel Zinic		GIEBEL FilTec GmbH www.giebel-adsorber.de info@giebel-adsorber.de		Maßstab 1:5	
Rev Änderung			Datum		Name		Format A3	
Schutzvermerk ISO 16016 beachten			Identnummer:		Blatt / von		1 / 1	