



GIEBEL
FiTec GmbH

GEARBOX IN THE SUGAR INDUSTRY

GIEBEL FiTec GmbH

Carl-Zeiss-Str. 5

74626 Bretzfeld-Schwabbach

Germany

 +49 (0) 7946 / 944401 - 0

 info@giebel-adsorber.de

 www.giebel-adsorber.de





GIEBEL Adsorber®

...setting standards in aeration drying!



**Sugar Industry
Rain**

Sugar beets based on sugar beet and sugar cane are produced using GIEBEL adsorbers. Carefully designed ventilation dryers are dimensioned to save space.



At the Rain plant, Südzucker processes up to 270,000 tonnes of sugar every year. In the processing process, a central conveyor belt feeds the beets to the cutting machines. Südzucker relies on industrial gear units and motors from various manufacturers, such as SEW. Südzucker is one of Europe's leading suppliers of processed sugar products.

Data to the plant

- Use Adsorber from 12l free volume
- Adsorber possible outdoors
- 100 Gears in use
- Standstill corrosion no longer occurs with adsorber application
- Campaign from September to December





GIEBEL Adsorber®

...setting standards in aeration drying!

Gearbox without adsorber



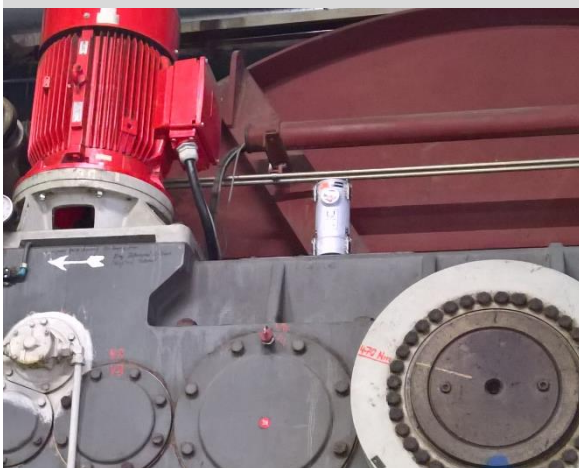
Due to a less isolated industrial hall and the fact that all doors are opened regularly during operation, humid ambient air with large temperature fluctuations prevails. This greatly promotes the formation of condensation.



The intake air and the constant contact with the environment ensure that air moisture flows into the gearbox and condenses on cooling.

This leads to corrosion with particle abrasion and thus damage to the gearbox. The operation of sugar production is thus no longer guaranteed and generates high maintenance costs and downtime.

Necessity of an adsorber



Respiratory dryers are indispensable for protecting the gearboxes against sugar damage from condensation damage. Through the use of adsorbers, the humidity in the gearbox is reduced and the dew point (temperature at which the air liquefies) is shifted to high minus degrees.

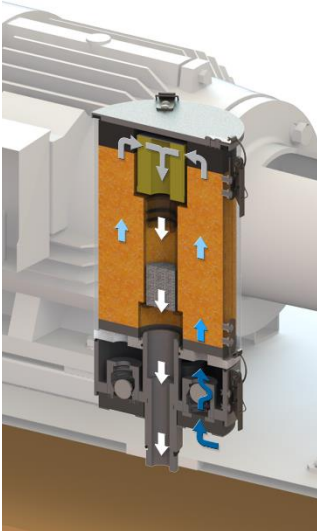
With this measure, the gear oil is permanently protected from water. An oil change can thus be prevented or delayed for a long time.



GIEBEL Adsorber®

...setting standards in aeration drying!

Function in a sugar production



Especially in the production of a food the respiratory dryer must be selected correctly.

In the rare use of just a few months of the gearbox, the desiccant contained must be protected from the surrounding humidity to achieve a multi-year maintenance interval. A maintenance interval of 3-4 years can be easily accepted.



Reference & Application Example





GIEBEL Adsorber®

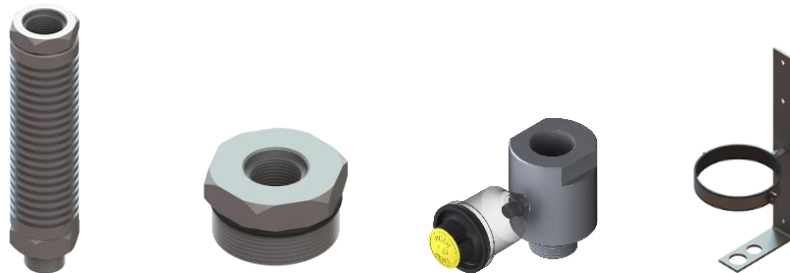
...setting standards in aeration drying!

Selection Adsorber



ADSORBER	VENT PA-D	VENT PA-R	VARIO PA-D	VARIO PA-R	VARIO MA-D	VARIO MA-R
Valves	✓	✓	✓	✓	✓	✓
Refillable	✗	✓	✗	✓	✗	✓
Material	Plastic + NBR-D		Plastic + Aluminum + NBR-Seals		Aluminum + FKN-Seals	
Transmission volume (Oil- and air volume)						
10 – 50 l	vV 200-PA	vV 210-PA				
50 – 100 l	vV 220-PA	vV 230-PA				
100 – 800 l	vV 300-PA	vV 310-PA	DV 300-PA	DV 310-PA	DV 300-MA	DV 310-MA
800 – 2400 l	vV 320-PA	vV 330-PA	DV 320-PA	DV 330-PA	DV 320-MA	DV 330-MA

Suitable Accessories



ACCESSORIES	Oil Mist Separator	Adapter	Protection adapter	Wall mount
Details	Separation of larger oil particles	With external and internal thread	Contamination indicator filter	Mounting on wall with hose



GIEBEL Adsorber®

...setting standards in aeration drying!




GIEBEL FiTEc GmbH

Carl-Zeiss-Str. 5

74626 Bretzfeld-Schwabbach

Germany

 +49 (0) 7946 / 944401 - 0

 info@giebel-adsorber.de

 www.giebel-adsorber.de

Your contact person for GIEBEL Adsorber

